

# Rock Breaking News

(A joint venture between Kinross Gold Corporation and Goldcorp Canada Ltd.)



*People*      *Partnerships*  
*Production*      **SAFETY**  
**MARGINS**      *Reserves*



Over half the year has passed already which means that we only have a month and a bit of real summer left to get out and enjoy an evening of softball and support our team the Gold Diggers, or cross the street and enjoy some of the PJV's finest coaching or watch their kids play a great game of chase the ball ... or as its otherwise known, soccer.

Speaking of soccer, an Italian flag was found on top of the head frame after Italy won the world championship; fortunately we didn't receive any harassment complaints from France's fans who were likely busy returning their jerseys to the closet for another 4 years.

As far as work goes, it's been a challenging year. We had the takeover going on for what seemed like forever ... extreme low grade issues were experienced at Pamour, the Dome underground's startup schedule was slipping and Hoyle Pond had experienced the lowest three month grade in its history.

Fortunately, through much hard work and dedication our team at Pamour was able to correct

some of the grade issues and put together a re-forecast for the remainder of the year. The Dome Underground team was able to bring things back on track leading up to a great month in May, followed by the Hoyle Pond team fixing up some track and sequencing issues thus getting their tonnes back on plan which kicked the grade up a notch.

These efforts definitely helped put the PJV into a position to meet our revised forecast levels for the second quarter and set us up to work toward budget levels again in the third quarter ... leveling off at 47,000 ounces or 13% short of plan.

Conveniently, our difficulties were somewhat offset by the gold price which topped \$725 US/oz in mid May, then falling quickly by \$150 US/oz less than two weeks later. It appears that gold prices have leveled off higher than the beginning of the year which is hopefully a trend that will continue.

Our safety record has been improving and the PJV has been having fewer accidents this year. We must continue to be

diligent with our contractors to ensure they work safely as well.

That said, I would like to thank our safety team and all PJV employees for taking safety seriously and working together to make the PJV a safer place. Please keep up the good work and remember, take the time to do it safely ... or don't do it at all.

Congratulations go out again to our Mine Rescue team for showing Ontario that they are the "best of the best" after winning the Provincials. Great job guys!

*We have recently completed our Strategic Business Plan and are setting our sites to the future to ensure longevity at the PJV. Enjoy the remainder of your summer and please work and play safely. Until the next time ...*

**Chris Cormier**  
Mine General Manager



## growing our future

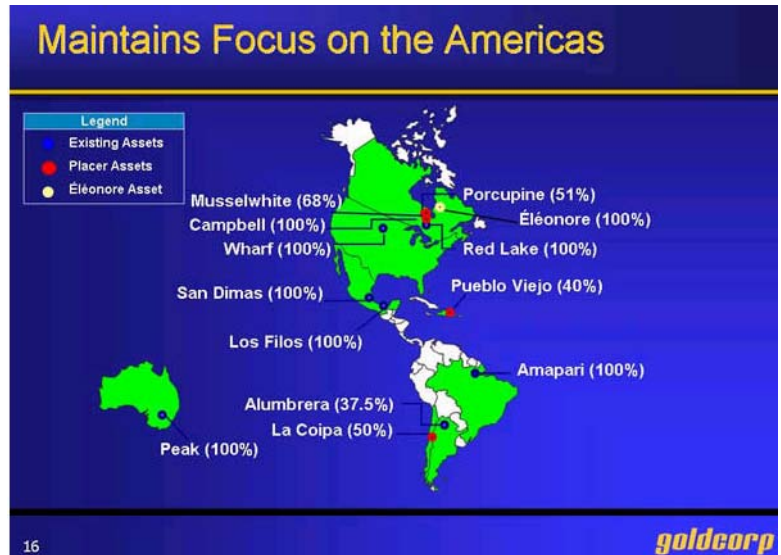
# Goldcorp Umbrella ...

Welcome to the first edition of Rock Breaking News under the Goldcorp banner. The change from Placer Dome to Barrick then to Goldcorp officially took place on May 19, 2006. I thought this would be a good opportunity to explain a little about Goldcorp, its' leadership and the company's future expectations.

Goldcorp Inc. currently has ownership of thirteen operations and projects around the world of which the three Canadian Operations and the Wharf Mine in the United States report to **Steve Reid** in Toronto. Steve is the Executive Vice President responsible for Canada and the US and he reports directly to **Ian Telfer**, the CEO of Goldcorp Inc..

It is Goldcorp's desire to remain corporately agile, hence the company will strive to keep a small corporate office in Vancouver supplemented by smaller satellite offices in Canada, Mexico and Brazil. The size advantage allows the company to react quickly to opportunities whether at a mine site or at a new acquisition wherever it may be. Therefore, much of the decision making affecting the PJV will occur either at a regional or local level allowing us to make decisions that are in the best interest of the PJV's future.

There is a lot of information on the corporate website and some good presentations showing the overall direction of the company which can be found at [www.goldcorp.com](http://www.goldcorp.com).



Chris Cormier

## Fritzy Retires

**Bob Arbic** officially retired as he turned 65 on July 14<sup>th</sup>.

Affectionately known as "Fritzy", Bob was an institution in the core shack at the Hoyle Pond operation for well over 10 years. His hard work, dedication, humour and his sense of pride will always be missed.

All of the PJV Geology Department gathered together to honour Bob as he enters into retirement. We would like to express our thanks and to extend our warmest wishes to Bob and his wife Alma in the years to come.

**Kimberley Norman**  
Exploration Geologist



## Heart of Gold

Six PJV employees recently participated in the **2006 Heart of Gold Triathlon**, based at Gillies Lake. Benefits from the challenge go to the construction of the new Ski Runners Chalet.

Members included **Don McRae** and **Ivan Langlois** from the Hoyle operation, both having recently completed a 26-mile marathon in Ottawa, and **Imola Götz**, **Bob Benoit** and **Bertha Bell** from the Dome operation. **Bob Corbeil**, a summer student in the Administration Department also participated. Congratulations to all participants ...

**Carole Gelinis**  
Drafting Technician



# Building bridges to our future ...

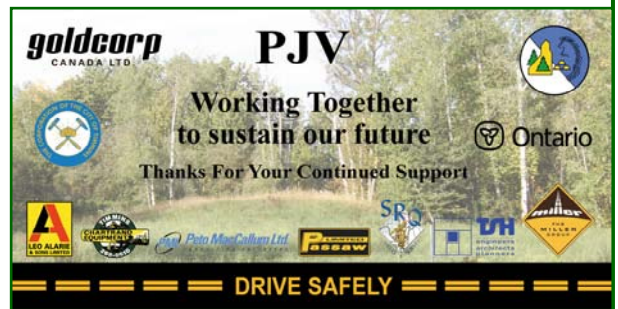
Partnerships with our employees, communities, suppliers, stakeholders, city and government are integral to the success and longevity of the Porcupine Joint Venture.

This is evidenced as Mayor Vic Power congratulates Chris Cormier, Mine General Manager of the PJV on the successful realignment and completion of a 6.1 km stretch of Highway 101 East. "It's a great triumph of engineering and cooperation between the city, MTO and the private operators of the company," said Mayor Power. "All around, it's been a great team effort."

The formation of the Porcupine Joint Venture in 2002 allowed Kinross Gold, and then Placer Dome to combine assets to allow an extensive feasibility study to be conducted which determined that there was a significant amount of ore under the highway. Ultimately, it required relocation of the highway, as well as a portion of Three Nations Lake to make the whole project viable.

The process was involved, partnering with many agencies and the journey was long! But thanks to our very dedicated team of professionals at the PJV, this project has come to fruition.

Illustrated at right is a replica of highway bulletin signs (8'h x 16'w) which are placed at both ends of the highway, ensuring that all of our key partners are aware of our appreciation.



*Challenges become opportunities when the right people join together.*

## Healthy Tid-Bits

### Water - Why is it so important for my body?

On a daily basis we require water for a number of bodily functions:

- For digestion (to transport nutrients and remove waste products)
- To lubricate body parts (i.e. eyes and mouth)
- To cushion joints as a shock absorber
- To maintain blood volume (the fluid part of blood)
- To control body temperature (lose heat by sweating)



### Which are the best fluids for preventing dehydration and for re-hydration?

Water, 4% to 8% carbohydrate containing sports drinks, unsweetened juices and sugar free, diet drinks are good beverage selections to prevent dehydration and for re-hydration. Alcohol and caffeinated beverages (coffee, tea, cola) are not suitable fluid choices because these drinks cause us to lose more fluid.

Highly sweetened beverages, such as pop, sweetened juices, frozen slushy-type fountain drinks and sweetened iced tea are also not ideal choices for re-hydration or to prevent dehydration, because these sugary beverages cause the body to lose more fluid during their digestion.

Water is essential for health and wellness. We can only survive a few days without water, whereas deficiencies of other nutrients may take weeks, months or possibly years to develop.

Sheila Saarela & Bertha Bell  
Occupational Health Nurses

# Gold Diggers Pedal to the Occasion

The PJV's Gold Diggers raised a grand total of \$3,899 for the **Heart & Stroke Foundation**. This is \$615 more than last year!

Our team was one of the top fundraising teams and we have been entered into the draw for the mountain bikes which will be held on October 6<sup>th</sup>, 2006.

In total, the region raised an amazing \$107,223 ... almost \$7,000 more than last year.

Thanks to all who participated.

Line Bilodeau  
HR Coordinator  
Information Systems & Benefits



## PJV Awards Scholarships

### PJV University Scholarship

Kyle Simunovic, son of Catherine and Michael Simunovic (Technical Services Dept. - Geology) will receive a scholarship in the amount of \$2,000 per year to a maximum of four years. He is a graduate of O'Gorman High School. Kyle will be attending the University of Ottawa taking a joint degree program in Public Administration and Political Science. His career goals are to become a public servant, educator, legislator or foreign diplomat.



### PJV College Scholarships (photos unavailable)

Amanda Lepine, daughter of Mike Lepine (Safety) will receive a scholarship in the amount of \$1,000 per year to a maximum of three years. She is a graduate of Ecole Secondaire Theriault. Amanda will be attending Cambrian College to study Public Relations. Her goals are to pursue a career in public relations or human resources.

Cory Elliott, son of Laurie and Glenn Elliott (Pamour Pit) will receive a scholarship in the amount of \$1,000 per year to a maximum of three years. He is a graduate of Iroquois Falls Secondary School. Cory will be attending Northern College in the Welder / Fitter Program. His goal is to become a certified welder / fitter.

The winners were selected by a committee consisting of:

Gladys Charbonneau	PEER Committee Co-Chairperson
Steven Mitchell	USW, Local 7580 President
Wyman Gosbee	Miner 1, Hoyle Pond Mine
Helen Mayrand	Mine Clerk, Hoyle Pond Mine
Mario Lachance	Mill Asset Management General Foreman

*Protect your hands.*

*You need them to pick up your pay check.*

# 2006 Mine Rescue Champions

## PJV Wins the 2006 District and Provincial Mine Rescue Competitions

Goldcorp Canada Ltd. - Porcupine Joint Venture captured three awards at the District Mine Rescue Competition held in Kirkland Lake on May 4<sup>th</sup> and 5<sup>th</sup>. They placed 1<sup>st</sup> overall out of five teams from across the district winning the Percy C. Smith Memorial District Trophy. The team also won the Special Equipment Award called the Clarence Frost Trophy awarded to the team that performed the best with special equipment. PJV № 3 man Danny White captured the Archie K. Graham Trophy handed out to the competition's best rookie.

On June 10<sup>th</sup>, the PJV won the Provincial Mine Rescue Competition held in Timmins. The team competed against five teams from across the Province. This is the first time a Timmins team has won the Provincial Competition since the Dome Mine captured the title in 1992.

Approximately 180 hours of competition training is given to the team to prepare for both competitions. They trained under oxygen for roughly 2.5 hours each day and used at least one form of special equipment during each training session.

It is important to prepare the team for the competition. It is also important that the team be properly trained should they be required to respond to an underground emergency at the PJV or any other area mine. It is comforting to know that the PJV has such a high caliber of trained and dedicated mine rescue personnel that are willing to train and study on their own time.

There is a slogan mounted on the wall at the entrance to each PJV Mine Rescue room, "**It Means Something To Be Here**". It must mean something to each PJV Mine Rescue person that they put in the time, commitment and dedication to better themselves. It must mean something to work as a team, and to be working in a room where the 1992 Dome Provincial Mine Rescue Champions once trained.

There is also a slogan mounted on the wall, visible as you exit each mine rescue room, "**It Means More To Leave**". It means more to each team member as they leave after each emergency. It means more to management that each team member leaves, and it means more to each wife, child, mother and father that each one of these men leaves this room safely.

"When each team member understands these slogans, they are already Champions", Ken Cook stated.

### Team Members Include:

Captain	Armand Massicotte
Vice Captain	Evan Pelletier
№ 2 Man	Rick Ladouceur
№ 3 Man	Danny White
№ 4 Man	Carl Uusivirta
№ 6 Man	Greg Janiuk
Technician	Terry Sprowl
Briefing Officer	Rob Ladouceur
Coach	Ken Cook

## 2006 Champions



## Diggin' Down

The last three months have been filled with a number of accomplishments and challenges for the Pamour pit. For May and June the pit maintained Triple Zero statistics. Congratulations to all employees on this achievement and let's keep focusing on safety in everything we do. Recently, Ed Froelick retired and Jason Hack left the pit to pursue a job opportunity out west. All the best to Ed and Jason in their future endeavors and thanks for the contributions they made to the pit over the years.



In April a new plan was put in place for the Stage I pit, requiring it to be mined in three pods. Operations and Technical Services joined forces and did an excellent job of coordinating the mining to meet the new plan in a safe and efficient manner. As well, a renewed focus on grade control and maintaining dig directions has resulted in improved grades. During the period we also started stripping the T1 tailings, built up the T2 transition zone, assisted the Pamour Project Group with the dam and highway construction and relocated the parking lot in preparation for the new highway opening. It is only through the efforts of all pit employees to improve and adapt that we have been able to achieve these results.

The next few months will be an exciting period as we start focusing on stripping the Stage II area in preparation for mining this phase of the pit. Further, we will resume mining on the North Pod of the Stage I pit, once the West pod is finished. In addition, we'll be commissioning the water pond, installing security systems and fencing around the Pamour office, commissioning the pit dewatering system and completing the T2 transition zone. It will be busy! Have a safe and enjoyable summer.

**Paul Miller**  
Interim Operations Superintendent

## DUG Diggers Report

During the second quarter the Dome Underground reached a commendable 189 days of Triple Zero. Congratulations to all employees on reaching this significant milestone by working together safely. Recruiting for six additional miners was started to allow us to increase our production above planned levels as additional Upside stopes were added. Welcome back to Roman Godin who successfully bid on one of the positions. Five more miners should be hired in the very near future.

April was a memorable month for the Dome Underground as the first production muck was hoisted to surface for milling, since the mine was put on Care and Maintenance in May of 2004. By the end of May, all the muck that had been stored in the ore passes during the first three months of the year had all been successfully skipped to surface. Other accomplishments during the quarter included completing the development of the 227260AL and the 278077AL longhole stopes and starting production longhole drilling on the 227260AL stope. Thanks to all underground employees for making this happen.

Also in April we received approval to proceed with development of the six additional Upside stopes and are now in the process of developing and mining some of these areas. In total, the Upside stopes will add 39,784 tonnes and 8,563 ounces of production to our mining plan in 2006. Engineering, geology and operations combined to do a great job of reviewing the Dome Underground's impressive list of resources, and selecting and designing the Upside stopes. As well, approval was received to proceed with development of the 155549AL bulk stope. A tender was prepared and sent out for bids on the longhole development in early July. The addition of the Upside stopes and the approval of the bulk zone are all indicative of a bright and expanding future for the Dome Underground.

Our next challenge will be to add more stopes to produce from in 2007. This is a challenge that I am confident we will meet.

**Paul Miller**  
Interim Operations Superintendent

*Safety, like a good retirement plan, provides for a better tomorrow!*

# Rock Doctor Speaks Out

Summer is here and so is the end of the Q2 / 2006. The feverish rate of diamond drilling continued at Hoyle Pond with nearly 28km of core drilled during the quarter. Of this, 21km was focused on longer term exploration targets.

Recent drill results from some of our exploration targets suggest a new plunge for the B-3 Vein which is much shallower than previously thought. Recent hits located approximately 120m down-plunge from the lowest resources on the vein included 9.4 g/t over 2.7m, 10.6 g/t over 2.6m and 11.2 g/t over 2.1m. Ongoing drilling will infill and further define this potential for bulk tonnage near our current ramp infrastructure.

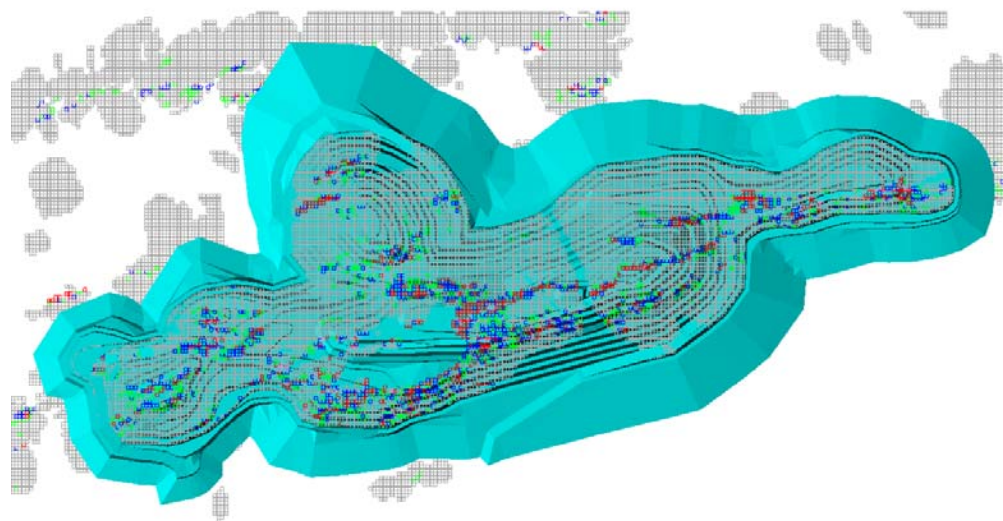
Results from another Hoyle exploration program seem to indicate yet another A Vein style structure lying approximately 50m further west of the A-West Vein at about the 800m L. Three diamond drill holes encountered grades of 15.30 g/t, 19.13 g/t, and 18.48 g/t on the vein. Infill holes will be added to determine whether this new target opens up vertically and along strike. The new vein will be named the "C" Vein, NOT the A-West-West-West Vein.

The systematic evaluation of the upper Hoyle Pond side of mine is on schedule. The geological compilation and diamond drilling at Hoyle will be winding up by the end of August. Block modeling of all remaining reserves and resources has already begun and recent drilling on the 10 Vein between 3 and 5 levels has added approximately 18K to 19K tonnes of ore grading 11.7 g/t. Other encouraging results are also coming in from the 22 Vein complex and the 250 Zone below 4 Level.

Other initiatives slated to start in August include the testing of a photonic probe and of the "MineMapper" system. The probe uses a camera to record the different characteristics of the rock as it travels down a longhole production hole. The images are downloaded into special software which is similar to the facial-recognition technology used in airports across the world to identify potential criminals and terrorists. The software interprets the images and differentiates the ore from the waste. Accurately detecting the vein would offer more control on production drilling and minimize dilution. The "MineMapper" system integrates a geological mapping software with a total station surveying unit. It would allow geologists to tope up underground development and efficiently map in the ore and other geological structures with laser accuracy.

Meanwhile at Pamour, **Ralph Koch** has put a significant amount of work into the creation of a new block model. Block models are essentially three dimensional blocks that are arranged similar to an even stack of sugar cubes. Each block contains information that is needed when planning to mine ore from the open pit. They provide an understanding of where the ore is, how much ore there is, and at what grade. With a year of production under its' belt, it was possible to evaluate how well the original block model estimated the gold content in areas that were mined. The model was improved and re-optimized to ensure that the pit will be mined in the most efficient, safe and profitable way possible.

**Alain Mainville**  
Senior Underground Geologist



Illustrated is the Pamour Pit and part of the new block model. Each block represents a 9m cube of ground and they are colour coded by gold grade. High grade blocks are shown red, medium grade blocks are blue, low grade blocks are green, and waste blocks are shown in grey.

# Changes in Asset Management

**Harry Kennedy** has returned to the Mill as Asset Management Supervisor. He began his career with the company in 1990 and has supervised not only at the Mill but also the maintenance shops at Hoyle and Dome. His knowledge and strong experience will be an asset to the Mill Asset Management team and the sound of his squeaky boots will be missed by his friends in the Plant Asset Management hallways.

**James Gervais** has been appointed to Maintenance Services Supervisor effective August 08, 2006. James started with the company in 2000 and moved to Pit Shop Maintenance Supervisor in 2002 where he developed his strong supervisory skills. James will be responsible for the plate, machine and light vehicle shops.

**Roger Carriere** has accepted the position of Dome Underground Maintenance Supervisor effective August 01, 2006. Roger came to Dome from De-tour Lake in 1989 and through his years as a journeyman Roger has demonstrated strong leadership skills. These will serve him well with this new challenge. Roger will be responsible for underground mechanical and electrical shops, as well as maintenance services (hoist/shaft). Congratulations to all.

The Plant Asset Management Department is pleased to welcome **Lorne O'Connor** and **Marcel Jalbert** to the Underground Maintenance shop. Welcome also to **Dean Johnson** - the newest addition to the Maintenance Services shop.

Organizational changes have been made to the welding crews. **Shawn Krupka** and **Dave Pigeon** have been added to the 5x5x4 schedule.

**Terry Burkholder**  
Dome Asset Management  
General Foreman



The old powerhouse compressors shown above have been sold and are currently in the process of being dismantled to make the long journey to their new home in Peru.

## The Porcupine Joint Venture Recycles:

- POP CANS
- OFFICE PAPER
- TONER CARTRIDGES
- CARDBOARD
- SCRAP STEEL
- WASTE OIL
- ANTIFREEZE
- VARSOL (PARTS WASHERS)
- BATTERIES (LEAD-ACID + NI-CD)



## Regional Exploration

As the summer seems to slip by us, exploration diamond drilling continues on projects outside the active mine sites.

The Regional Exploration Group is busy on two main projects. The Hollinger Project is the busiest with 3 diamond drills actively collecting information in order to assist in evaluating any opportunities that may exist on the property for mining, as required from the closure plan.

A focused team of people are also busy collecting and digitizing historic underground and surface data on both the Hollinger and McIntyre properties. One drill is busy testing several targets on the early stage Beaumont Property, located west of the Broulan Reef property.

We also just completed a 5,300 meter drill program on the Pamour North Contact in order to possibly add this mineralization into the Pamour Open Pit plan.

As well, an exploration program on the early stage Highway 144 property, west of Timmins was completed in May. The Group continues to actively pursue exploration in attempts to increase the mine life of the Timmins Operations.

**Keith Green**  
Sr. Regional Exploration Geologist

# HUG Diggers Report

Things continue to move along at a rapid pace here at Hoyle. The summer students are already past the half-way mark of their placements and many of us have already begun to enjoy some vacation time.

I would like to welcome two new hires to the Hoyle operation ... **Grant Scott** and **Joe Campagnola**.

Track work on the 720m main line is now complete. Congratulations to **Mike Burns** and his crew for an excellent job! The rail haulage infrastructure is now in excellent shape to meet both our short and long term goals.

Recently we received a second tractor style mancarrier. This unit is sure to provide us with improved reliability and reduced maintenance costs. A new Canon truck for the mobile mechanic shop also arrived and all feedback received to date has been positive. This unit is sure to assist the maintenance group to deliver an improved service to the mine department and also make their jobs easier. Additional new equipment purchases over the balance of 2006 include a new boom truck, a rebuilt 3.5 yard, 6 yard and 2 boom jumbos.

We are scheduled to receive two additional Isuzu's and we are also moving forward on the purchase of a new Miller MK10 truck. Although significantly more expensive than the Isuzu's, there are a number of benefits expected.

Our surface vent upgrade project is well underway. Redpath has completed the first leg of the raisebore work from surface to the 280mL. The raisebore machine is currently setting up on the 280m to 440 leg and construction of the surface infrastructure has started. Once complete, the cost of this project will be +\$4 million. The vent system will allow mining to a depth of 1,800m and will reduce ventilation power needs significantly.



New Man Carrier

Speaking of ventilation and power needs, we have received approval to automate the underground auxiliary fans. This was a suggestion received through our Watt Watchers Program. It is expected that once complete, savings of ~\$500K in reduced power costs will be realized. Needless to say ... keep those suggestions coming in!

The Hoyle access road and parking lot have now been re-topped. This will eliminate many issues. Please keep in mind, however, that the posted speed limits must be respected.

With the Pamour Project construction coming to an end, **Kevin Hedican** will be returning to the Hoyle site in mid August. Thanks, Kevin, for helping out where and when needed (again)!!

As the summer continues to move quicker than most of us would like, be sure to enjoy our great outdoors, relax, spend time with family and friends, and smell the roses.

Remember, work safe and play safe!  
Have a great summer ...

**Ken Wojtus**  
Hoyle Pond Mine Superintendent

# Brinks Celebrates 40 Years

Forty years ago, on July 4<sup>th</sup> 1966, Brinks Canada opened the doors to its Timmins Branch Office to service the business communities of Northern Ontario. In that same year a partnership was formed between our two companies. Brinks Canada has been providing the PJV with secure transportation services since 1966.

To help mark the occasion Larry Rodo - Brink's Canada's President & CEO, Steve Collins, - Regional Manager - Central Canada, Bella Davidson - Account Executive - Manitoba & Northern Ontario, and Jo-Lee Morissette - Area Manager - Central Canada, attended a mine tour at the Hoyle Pond operations of the PJV.

Congratulations on the 40 years and all the best in the future!

**Bill McMillan**  
Controller



On top of the Hoyle Pond Headframe are from left to right: Larry Rodo, Jo-lee Morissette, Bella Davidson, Steve Collins and Bill McMillan

# Environmental

Greetings from the Environmental Department.

The summer season is now in full swing and so are most of our monitoring and rehabilitation activities. The group presently consists of **David Bucar** - Environmental Superintendent, **Londie Cameron** - Environmental Technologist, **André Perreault** - Environmental Engineer and **Roger Taillefer** - Environmental Project Supervisor, as well as **Kathy-Lynn Morrish** - summer student. We are planning on hiring a new Environmental Coordinator as well as a second Environmental Technologist before the end of summer in order to help keep up with the tremendous environmental permitting and monitoring requirements to which the Porcupine Joint Venture is subjected.

Many of you may have noticed Londie showing up at all three of our operating mine sites on a very regular basis to carry out compliance monitoring of surface and groundwater quality, air quality and noise. Londie also keeps track of all environmental incidents associated with the operations which, to everyone's credit, have been infrequent this year. With the help of Kathy-Lynn, Londie has succeeded in ensuring that all required sampling is completed in accordance with the wide range of permits the PJV holds.

## Aerial View of Highway Relocation

- \* New highway running east/west in foreground
- \* Haul road running north/south
- \* Pamour office complex and new parking lot at west
- \* Three Nations Lake Replacement at east

On the mine site rehabilitation front, Roger and André can be seen on several of the non-operating facilities which the PJV owns in Timmins. They'll be planning, managing or assisting in various reclamation projects. These projects include the Phase 2 rehabilitation of the Coniaurum Mine Tailings, work on the Hollinger Mine subsidences and mine openings, the relocation of the Pamour T1 Tailings dam and the construction of the Pamour mine water pond as well as several other smaller projects.

During a visit of the Coniaurum Mine Tailings in June, members of the Porcupine Watchful Eye saw first hand how successful the PJV can be at reclaiming tailings and ensuring that the facilities become stable for the very long term. The use of pulp and paper biosolids as an organic soil amendment has allowed a very rapid revegetation of completed areas and continues to amaze visitors. Furthermore, the perfect safety and environmental record on all projects he oversees demonstrates Roger's dedication in ensuring that all field projects are carried out in a safe and environmentally friendly manner.

The new Three Nations Lake basin and Three Nations Creek realignment are settling in nicely, with vegetation and numerous tadpoles finding a new home. We are all very proud of the new lake habitat which will have a much more productive spawning capability for walleye into the future.

The Porcupine Joint Venture's Environmental Department is committed to ensuring that Goldcorp operations in the Timmins area continue to meet or exceed the environmental expectations of the community and continues to recognize the efforts of PJV employees in improving the way we conduct our mining and processing operations.

Thanks to everyone in doing their part.

**Dave Bucar**  
Environmental Superintendent



## SAFETY SENSE - Jewelry can be Hazardous

Wearing jewelry at work can be the death of you, or could result in a life-long injury in the blink of an eye.

In one case, a planer operator was making minor adjustments on his equipment. It appeared that a piece of lumber coming from the planer caught his wristwatch and pulled his body into an out-feed chute. Two other timbers struck and killed him. The cause of this fatality was also related to other equipment and procedural problems, but if the victim had not been wearing a wristwatch, he likely would have survived.

Jewelry can be a serious hazard at work. It doesn't take much imagination to visualize the pain of getting your ring flattened while it's still on your finger. The metal of jewelry and the metal of machinery are much stronger than flesh and bone.

Many accidents have occurred when a piece of jewelry catches in machinery and the person is dragged into its mov-

ing parts. People have lost fingers, hands, arms and even their lives because of their rings. Some have been choked to death by their own neck chains.

Another common accident occurs when a person jumps down from a higher level ... but the ring gets caught on something. Workers have landed on the ground, but their ring and ring finger are still on the upper level.

Sparks are another serious hazard involving jewelry. In a hazardous atmosphere where flammable vapours or metal dust is present, a spark is all it takes to set off an explosion. These sparks can be caused by something striking the metal of your jewelry.

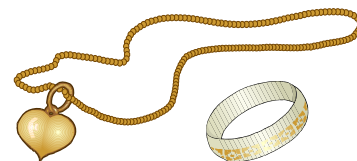
Workers are also advised to be aware of electric shock while wearing jewelry. If your ring or watch contacts an energized circuit, it will conduct the electrical current directly to you.

Thermal burns occur in a similar manner. When a piece of jewelry is heated by touching something hot, it holds and conducts the heat.

You do not have to be working in hazardous areas to be injured in jewelry related accidents. For instance, you could break your finger by catching your ring as you slide a crate on a shelf. The possibilities are endless, and they are all unpleasant.

Wearing jewelry is often a matter of sentiment or pride, but it doesn't belong in many work environments because it could endanger your safety and perhaps others around you.

**Jamie Mortson**  
Sr. Safety / Loss Control Coordinator



## Peter Lueddeke 1941 - 2006

At the Dome Mine, when a new engineer or geologist started, a tour of the files in the vault was required. The authority on all the files, from surveys to stope production records was Peter Lueddeke. Pete was an invaluable resource for both the Engineering and Geology departments, as he not only knew where everything was filed, but he remembered details about individual stopes.

Pete was born in Germany during WWII. He started at the Dome Mine in 1971 as an instrument man (surveyor) after working at the Aunor as a surveyor. He finally retired in 2004 after spending 31 years as longhole planner.

Pete had a great interest in the history of the mine and was involved with and contributed to the celebrations of the 90<sup>th</sup> and 95<sup>th</sup> anniversaries, as well as the closing of the Dome underground reception in 2004. He was also involved with the 'Quarter Century Club', of which he was also a member. He coached the mixed slo-pitch team and organized the popular tournament, near the end of the slo-pitch season.

We were saddened to hear of his death on July 4, 2006. He will be sadly missed.

**Erik Barr**  
Dome Underground Geologist



# WATT Watchers Update

The "WATT WATCHERS" program was introduced to the PJV in September of 2005. Since its inception, we have received approximately 250 suggestions. The Energy Management Committee has awarded fifteen \$100 dollar gift certificates and one grand prize of \$5,000 for the best suggestion of the year.

The top three projects that were brought forward to the Energy Management team are as follows:

## UNDERGROUND FAN AUTOMATION

This project will cost us approximately \$280,000 to implement and we should realize a savings of \$500,000 in electricity savings per year.

This automation project will allow us to control the underground auxiliary ventilation fans from the shifter's wicket which will allow us to shut down the fans when they are not required. This automation project will also help us reduce blast clearing times by only ventilating the active headings.

This project has been approved and we are anticipating that this system will be fully implemented by the end of this year!

## HEATING CONTROLS

We are currently looking at our heating controls site wide. By using fixed and programmable thermostats we expect to be able to reduce natural gas costs by a minimum of ten percent. The programmable thermostats will allow us to set back temperature settings in areas such as the administration buildings at both the Hoyle and Dome sites. The rule of thumb is that each degree of turn down is equivalent to one percent in energy savings.

## LIGHTING CONTROLS

A lighting audit was performed at the Dome site plant offices and the administration office. We found that the majority of lights are left on when the areas are unoccupied. The proposal is to install motion sensors and day timers throughout the complex in areas that are determined to be feasible. Another part of this project is to replace high bay lighting with regular fluorescent lighting where applicable and to reduce the amount of lighting in areas that are overly lit.

## Current Accomplishments

- Improved lighting control
  - \* Light reduction at Bell Creek Mill
  - \* Outdoor lighting control (photo cells)
    - Dome Mill
    - Dome E.T. Plant
    - Assay Lab
  - \* Unoccupied lighting control
    - Hoyle Pond compressor buildings
    - Hoyle Pond surface mechanical shop
    - Hoyle Pond storage barn
    - Dome Mill boiler room
    - Dome Mill compressor lighting
- Automation and Controls
  - \* Interlocking of magnet conveyors
  - \* Interlocking of scrubbers and make up air units
  - \* Automation of the stacker and feeder belts
- Elimination
  - \* Hoyle Pond Lights (top of head frame)
  - \* Lighting at Owl Creek storage buildings
  - \* Redirection of flow from bypass pump box to tailings pump box allowing elimination of the bypass pump



The "WATT WATCHERS" program is a very worthwhile program that will benefit us all for years to come. Remember, it all begins with you! On behalf of the Energy Management Committee, we would like to thank you for your ideas in energy reduction measures and please continue to submit your suggestions!

Tom Hacquard  
Energy Management Coordinator

# Seadog Speaks Out ...

In a recent newsletter, I submitted an article about Happiness and how I try to achieve it. Please keep an open mind ... this is only what works for me.

For me, **CONTENTMENT** is having a job, a roof over my head, food on the table, clothes, companionship and being able to afford the things that I want to have.

When my wife and I first got married (in the first year or so), we realized that we were having problems with money and the lack of it to pay our bills. The arguments over spending started and contentment was replaced by worry and resentment. We soon realized that we had to do something.

We bought one of those big hard cover ledgers, sat down together and wrote down everything that we were spending money on: smokes, snacks and everything we could think of, right down to the last nickel. It was fun and we even had a few laughs, even though we discovered that we were living beyond our means.

We got a loan from the bank and paid off some debt, so we could bring the payments down to a more manageable number. One thing about banks; they're always ready to help. Then we started to refine the ledger so that what we really had to pay (the loan, hydro, gas, groceries, mortgage, taxes, etc.) was the first priority, subtract it from the basic take home pay.

Everything went into the book and was subtracted from the base pay on a daily basis in case we forgot. So, we both knew what the other was spending (though if I bought a bag of chips I made sure I got one for her too). We kept this going for some time: use only the basic take home pay, and exclude the overtime or any other extra income. It helps to keep two bank accounts ... one for bills, the other for savings and to put what's left into it. After a while, you'll see that you will even have a savings account for things you'd like to have. There's nothing really complicated to make it work ... simply add and subtract. That's all there is to it. So have fun with it.

Eventually you will have a more contented home life. I know there are other matters that affect contentment but, of all, I think money is a big issue.

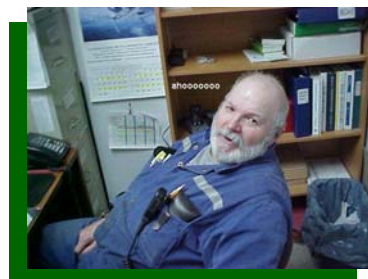
***You don't have to keep up with the Jones's because if you're living a happy life, the Jones's will be trying to keep up with you.***

Good luck

**Ahoooooooooooo**

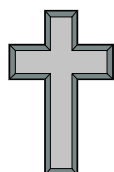
**Seadog**

aka **Glen Seymour  
Millwright  
Asset Management  
Mill Department**



## Condolences ...

We, at the Porcupine Joint Venture, have recently said farewell to three of our pensioners:



Philippe Levesque	June 1, 2006
Margaret Leblanc	June 13, 2006
Peter Lueddeke	July 4, 2006

We would like to extend our deepest condolences to their friends and family members. They will be greatly missed.

### Are you experiencing:

- Difficulties coping with stress / anxieties?
- Problems with drugs or alcohol?
- Anger / grief at changes in your life or at work?
- Parenting, marital or family concerns?
- Other problems?

### Help is Available!

#### EMPLOYEE AND FAMILY ASSISTANCE PROGRAM

Blain & Associates Psychological Services  
251 Third Avenue, Suite 6  
Timmins, Ontario

**CALL DIRECTLY: 268-0475**  
**e-mail: EFAPPJV@ntl.sympatico.ca**

This is a confidential service. The workplace will not be informed that you are seeing a counselor. You can access the directly program without asking anyone at work.

# New Faces

We would like to welcome some new employees to the Porcupine operations:

Claude Provencher	Labourer
Bobby Gagnon	Labourer
Daniel Kirouac	Labourer
Dawn Maenck	Labourer
Lorne O'Connor	Journeyman
Bradley Harvey	Open Pit Surveyor
Barry Hope	Long Range Planner / Project Engineer
Scott Grant	Miner 1
Kevin Bruneau	Mechanical Apprentice / Labourer
Joel Larouche	Mechanical Apprentice / Labourer
Joe Campagnola	Serviceman
John Harvey	Drafting Technician

*The door to  
safety swings  
on the hinges  
of common  
sense.*

Best wishes to all of the employees as they tackle their new challenges!



## The Stork Report

We would like to congratulate the following proud parents on the birth of the newest addition to their family:

**René Chalifoux & Cynthia Neill**

Baby Girl  
Taylor Chalifoux  
June 10, 2006

**Maurice Kirouac & Melinda Skouris**

Baby Girl  
Kaylee Kirouac  
April 7, 2006

**William Martin & Sylvie Bellavance**

Baby Boy  
Liam Martin  
June 19, 2006

**Jason & Amy Rockel**

Baby Boy  
Evan Rockel  
April 22, 2006

**Gerry & Amanda Stinson**

Baby Boy  
Rowan Stinson  
June 23, 2006

**Kevin Whalen Jr. & Christina Whalen**

Baby Girl  
Kyra Whalen  
April 4, 2006

May your sleepless nights come to an end ... soon!

# New Horizons

May 5, 2006 capped off an 18.5 year run with our company for John Folsinsbee. John's most recent position was that of the PJV's Asset Management Manager, and prior to that John was the Dome Mill Manager. He was visionary, energetic and extremely loyal. John was mentor to many, and will be sadly missed.

However, his flight to the future is grand. John accepted a position with G&T Metallurgical in Kamloops, BC and is their new Vice President of Operations. Well done, John ... from us to you ... good luck always!



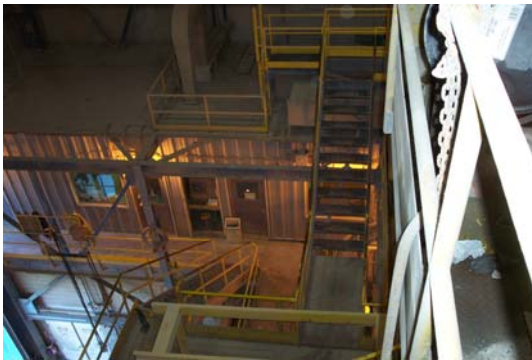
How do you think he got his family to BC?

# Mars Plow

A Mars Plow (Metal Automated Removal System) has recently been installed on the № 2 Conveyor at the Dome Mill. It is certainly a welcome addition ... Why, you ask?

Prior to installation of the Mars Plow, the № 2 Conveyor would stop each time a piece of metal was detected on the belt. The operator would then have to climb the stairs to the Picking Station, remove the metal and restart the belt. Operators were experiencing an average of 19 metal detections per shift and have experienced as many as 50 per shift, depending on the amount of metal in the muck due to open pit mining in the old underground workings. At 19 metal detections per shift, the operators would average 1,286 stairs per shift, just for metal detections alone! Physically demanding ... time consuming!

Installation of the plow reduced the amount of metal detector downtime from an average of 32 hours per month, to an average of 12 hours per month. This reduction in downtime related to less wear and tear on the operators, as well as allowing them more time to accomplish other duties required of them, plus a 3% increase in crusher utilization, which equates to increased tonnage.



Some of the stairs which had to be climbed to the Picking Station each time metal was detected to restart the belt.

## General Comments Made by the Operators

- Although we (operators) were skeptical and a little critical when the Mars Plow was presented prior to purchase, once installed, this piece of equipment was one of the easiest and trouble free to implement into the process.
- Benefit was realized immediately by operators in reduction of stair climbing and interruptions to the process, as well as the increase in tonnage realized by the company.
- Maintenance on the plow has been very low, considering the wear potential and the amount of use it has had. This has also been a very reliable and dependable unit. Breakdowns are very uncommon.
- This piece of equipment is highly regarded by the operators.



*"Excellent idea, works great, and fine tuning required to put it into operation was minimal. Benefits were obtained immediately."*

L-R: Chuck Guillemette and Pat Stinson



Mars Plow at work (down position)



The pile of crushed rock shown above is the result of 900 metal detector hits by the Mars Plow. This would have related to approximately 30 hours of downtime prior to installation of the plow.

**Gord Leavoy**  
Mill General Foreman



**Porcupine Joint Venture**

P.O. Box 70  
4315 Gold Mine Road  
South Porcupine, ON  
P0N 1H0

Phone: 705.235.3221  
Fax: 705.235.2343  
Email: [FirstName . LastName@goldcorp.com](mailto:FirstName.LastName@goldcorp.com)

[www.goldcorp.com](http://www.goldcorp.com)

As always, your comments and / or suggestions are most appreciated.

Please send to **Linda Loader** at:

Bus: 705 235 6589  
Fax: 705 235 6551  
Email: [linda.loader@goldcorp.com](mailto:linda.loader@goldcorp.com)



## Rock Breaking News



**Editor:** Linda Loader

**Contributors:**

Chris Cormier	Ken Cook
Jamie Mortson	Seadog
Paul Miller	Alain Mainville
Domenic Rizzuto	Line Bilodeau
Kim Norman	Carole Gelinias
Bertha Bell	Bill McMillan
Gord Leavoy	Ken Wojtus
Erik Barr	Sheila Saarela
Keith Green	Terry Burkholder
Dave Bucar	Tom Hacquard

*"Teamwork ... it's amazing how much you can accomplish when it doesn't matter who gets the credit."*