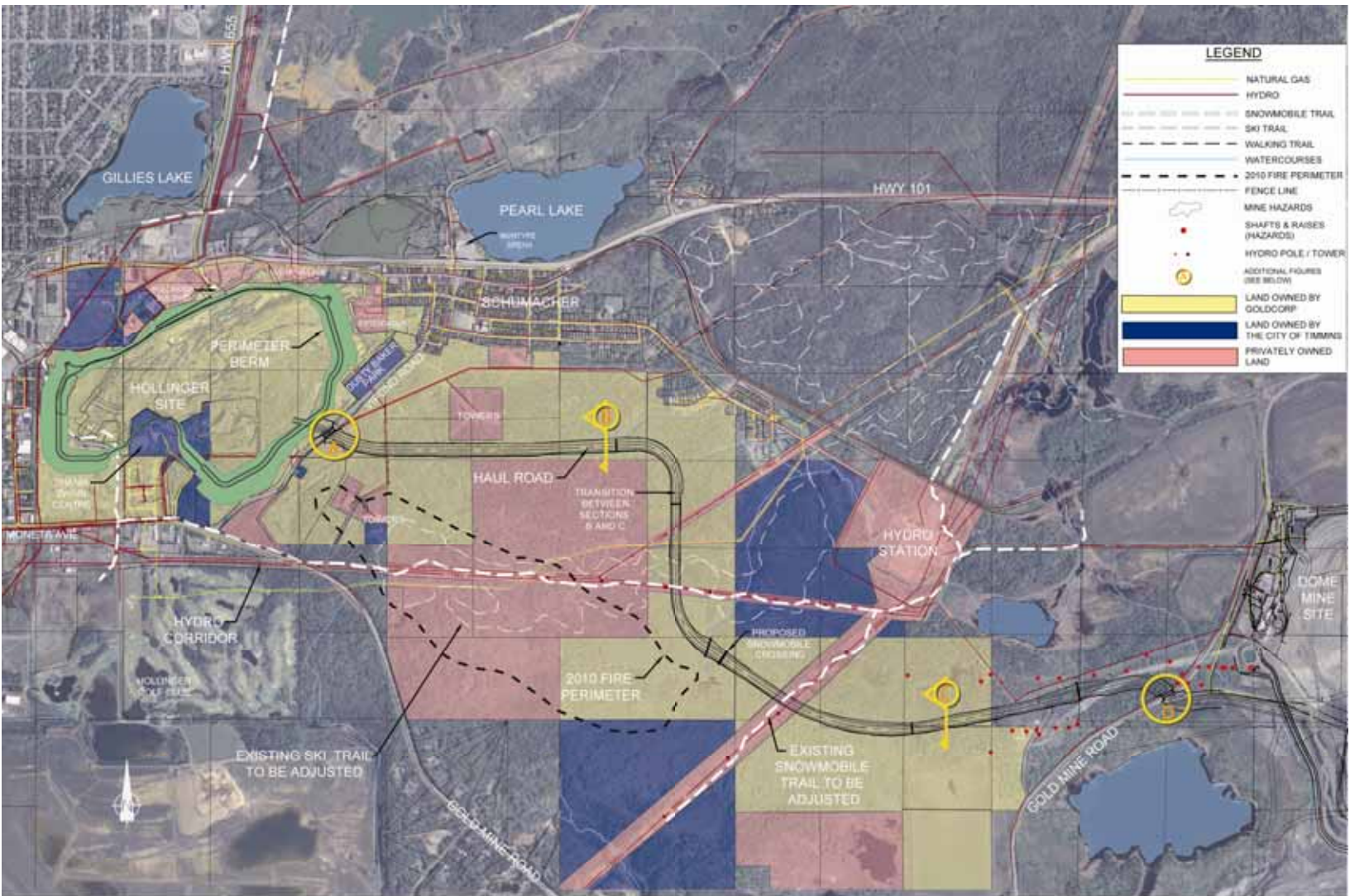


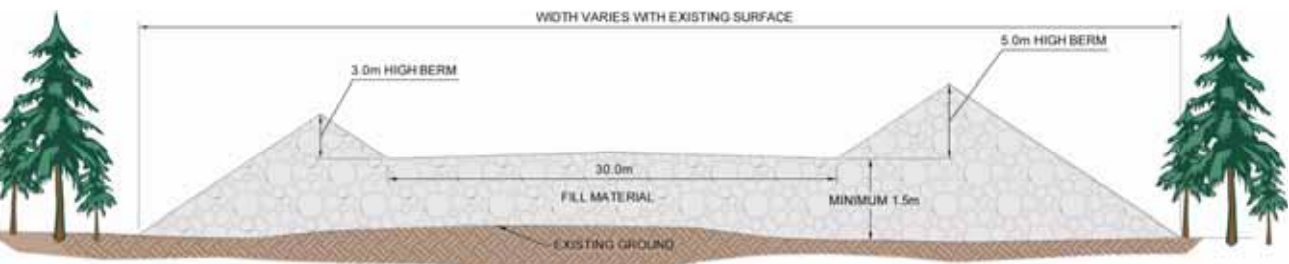
HAUL ROAD SITE PLAN



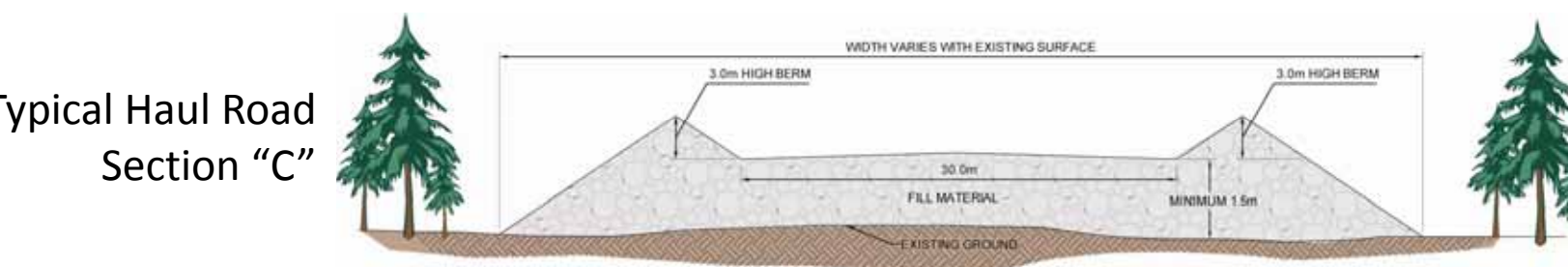
LEGEND

- NATURAL GAS
- HYDRO
- SNOWMOBILE TRAIL
- SKI TRAIL
- WALKING TRAIL
- WATERCOURSES
- 2010 FIRE PERIMETER
- FENCE LINE
- MINE HAZARDS
- SHAFTS & RAISES (HAZARDS)
- HYDRO POLE / TOWER
- ADDITIONAL POLES (SEE BELOW)
- LAND OWNED BY GOLDCORP
- LAND OWNED BY THE CITY OF TIMMINS
- PRIVATELY OWNED LAND

- Vipond Road Crossing (see additional display board)
- Sensitive Receptor Haul Road Section (see below)
- Typical Haul Road Section (see below)
- Gold Mine Road Crossing (see additional display board)



Sensitive Receptor Haul Road Section "B"



Typical Haul Road Section "C"

